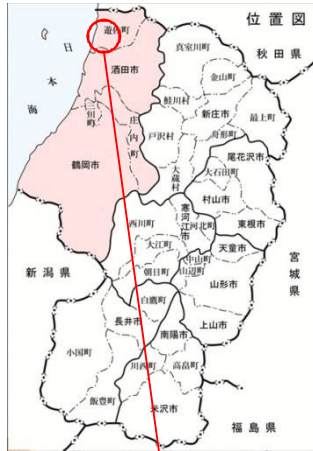
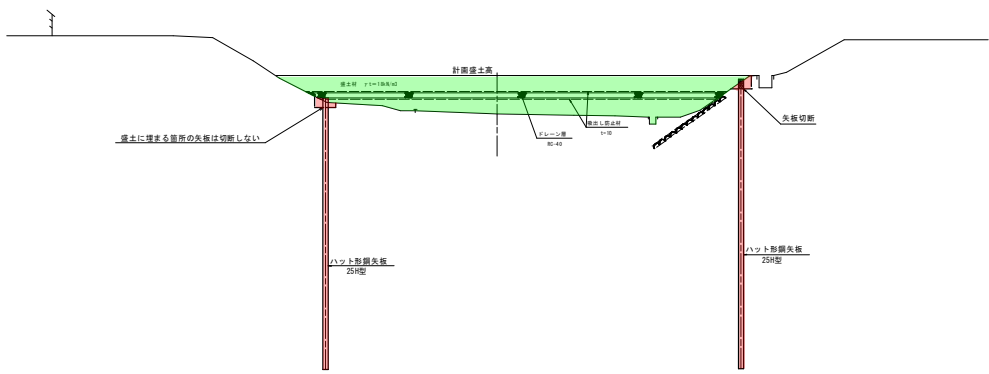
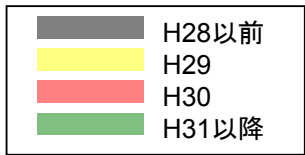
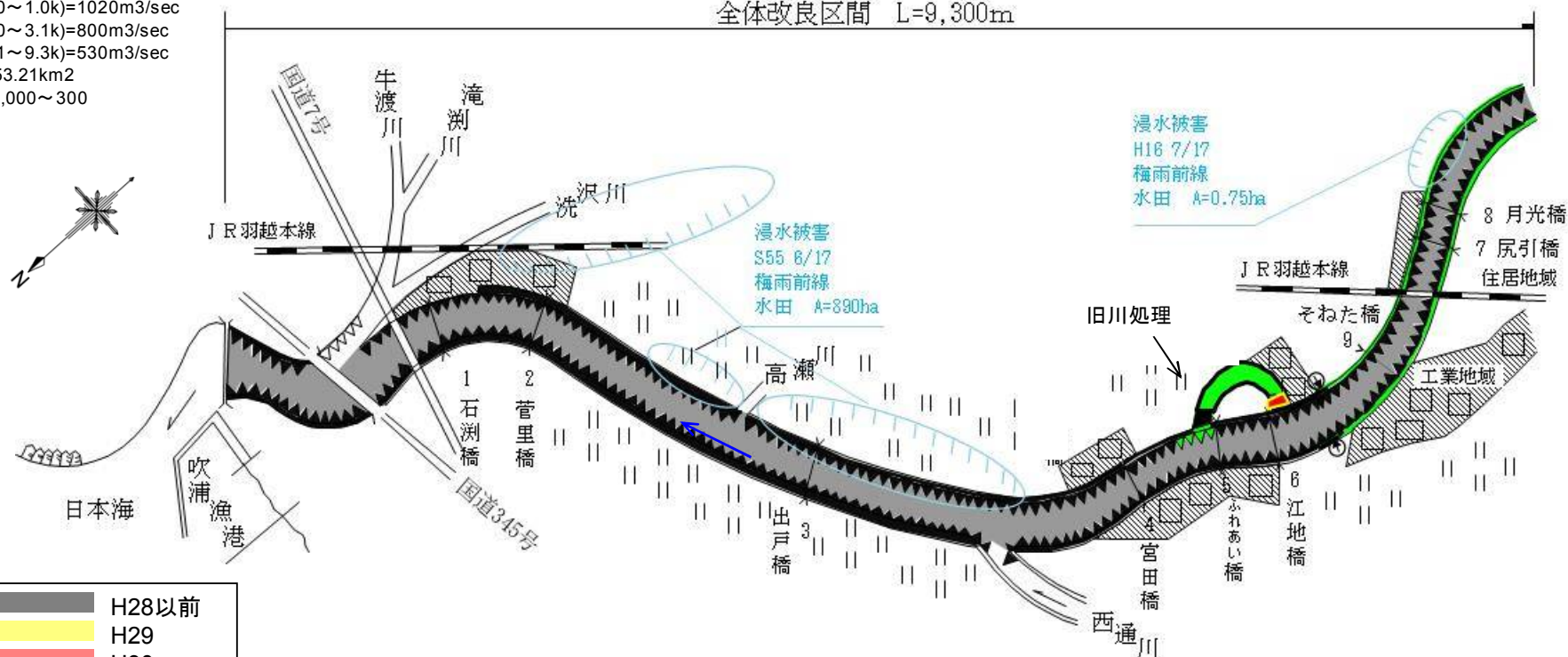


月光川
(遊佐町吹浦～遊佐)



Q(0.0~1.0k)=1020m³/sec
 Q(1.0~3.1k)=800m³/sec
 Q(3.1~9.3k)=530m³/sec
 A=153.21km²
 I=1/3,000~300

全体改良区間 L=9,300m



改修前 $Q=120\text{m}^3/\text{s}$



改修後 $Q=530\text{m}^3/\text{s}$



